



## Bath, Bristol and Somerset Cottages

Bath Spa is a beautiful World Heritage city famous for its Georgian architecture. Its larger neighbour Bristol, is a bustling, vibrant university city with historic docks. Both cities offer excellent shopping and nightlife, and the surrounding counties of Wiltshire, Gloucestershire and Somerset offer a range of outdoor pursuits. Everything you need for a perfect weekend away.

## Wild Country Cottages (6-12 people)

These three self catering holiday cottages are situated on the edge of the Mendip Hills, and just 14 miles from Bath. The maximum they can sleep is 12 people. Both properties are centrally heated and double glazed, and each has a log-burning stove for that extra cosy feel on a chilly evening. There is a television and video player in each sitting room.



The first cottage is extremely spacious with beautiful open views. The sitting room is large and well furnished. The farmhouse style kitchen/dining room has an electric cooker, dishwasher, fridge/freezer and microwave oven. There are doors from the sitting room and the kitchen to the patio areas and patio furniture is provided. It has three bedrooms and can accommodate 6/8 people. One bedroom has a king size bed and a large en-suite shower room. The other two bedrooms have 2 x single beds in each. There is also a double bed settee in the sitting room. There is a family bathroom with a shower and also another separate toilet.

The second cottage can sleep 4 people. It has a lovely sitting/dining room with doors to its own private patio and has a beautiful view. The separate kitchen is compact but with all the facilities of the cottage above. There are two bedrooms - one with a double bed and the other with two single beds. There is a large family bathroom with shower and toilet and another shower room with toilet.

## Peaceful Cottages (6-12 people)

These three new self-catering holiday cottages are situated in a quiet rural setting, yet are just 9 miles from Bath. Both cottages sleep four, are tastefully furnished and extremely well equipped. There are pubs and restaurants close by and they are conveniently situated for shops.



Each cottage has an open plan Shaker style kitchen, living and dining area with exposed oak beams giving a light and airy feel. There are French doors at the front of each, opening out on to a small patio area with garden furniture and barbecue. Each has a double bedroom downstairs and a shower room with wash basin and toilet. Ladder stairs lead to a mezzanine galleried twin-bedded room with a wooden floor.

The following equipment is available in each cottage TV, DVD, CD player, iron and board and hair dryer. There is parking available for one car for each cottage. It may be possible to bring an additional car but please let us know in advance.

## Somerset Barns (6-16 people)

These three fantastic oak beamed cottages have been recently converted from stone courtyard barns. They are equipped with modern facilities throughout whilst keeping with their traditional charm. They sleep 16 people in total.



The cottages are located on the edge of the Mendip Hills in Somerset. An Edwardian hotel bar and restaurant is a stone's throw away, and the nearest local pub is 2 miles away. Other local pubs, shops and restaurants are 3 miles away. The city of Wells is a 35 minute drive away, Bristol 30 minutes and Bath 50 minutes.

Each cottage has a BBQ. Cottage three has a private patio to the rear where you can put tables together which is excellent for BBQs and party gathering. There is a four star hotel spa within two minutes walk and all groups staying in the cottages get one complimentary visit.

## Cotswolds Cottages (6-18 people)

These cottages in the Gloucestershire Cotswolds are in a pretty village surrounded by fields just 2 miles from Westonbirt and 8 miles from Malmesbury. They are only 30 minutes to Bath and Bristol for a night out and are next door to a lovely gastro pub.



The cottages each have TV/Video and CD/Radio, kitchen with dishwasher, electric oven and hob, fridge/freezer and microwave. All bed linen and towels are provided.

## Luxury Stables and Lodges (6-34 people)

These four cottages and three lodges are just 12 miles from Bath and offer stylish and comfortable accommodation. Each cottage sleeps four people and has a double and twin bedroom, kitchen and lounge/dining room.



Each lodge has 3 bedrooms and sleep 6 people. Towels and bed linen are included.

In summer a small 'marquee' can be erected (10m x 4m) if required for BBQs etc).

## Chill-Out Cottages (6-34 people)

These cottages are in a small hamlet just 10 miles south of Bath. There are 1 x 10, 1 x 8 and 1 x 4 person cottages sleeping 22 people. There is also an additional 'cottage' which has 3 rooms sleeping 8 people but has no living area, just bedrooms. There are also 4 extra Z beds.



Each cottage also has flat screen TV's and a DVD player. Towels and bed linen are included (towels for the pool are not included).

The surrounding countryside has wonderful walks and afterwards you could make use of the pub/restaurant next door.



## Stream Cottage (8-10 people)

Stream Cottage is a detached property set in its own walled garden of almost half an acre, bordered by a stream and approached down a private lane.

It has been refurbished into a country house with four large bedrooms, huge lounge, a dining room, separate kitchen, a shower room, a separate bathroom and a huge private walled garden.

For larger groups it can be booked with Stream Mill to sleep up to 22 people.



## Stream Mill (10-12 people)

This beautifully positioned cottage is set in the Somerset countryside just south of Bath. The cottage has two double rooms, one twin room, a family room with one double and a two singles, and one double bed settee. The family room is en-suite and there is another large bathroom and a separate shower room.

The cottage has ample space to congregate. There is a large sitting room with log burning fire, a separate dining room, a good sized kitchen and a huge private garden with BBQ. Other facilities include 3 TV's, a DVD and CD player. For larger groups this cottage can be booked with Stream Cottage to sleep up to 22 people; and the dining table can be extended to sit 20 people.



## Bath Modern (9-12 people)

This stylish self-catering house is set in a large village on the outskirts of Bath (3.5 miles away). It's close to the centre of the village for local amenities including two pubs, canal side walks and convenience store but enjoys a private location with large garden and plenty of parking. There is accommodation for 12 people and it also has a hot tub!

The house has ample space for a group of friends to relax: the stunning sitting room has a huge wide screen TV, DVD player and CD stereo. Towels and bed linen are provided.



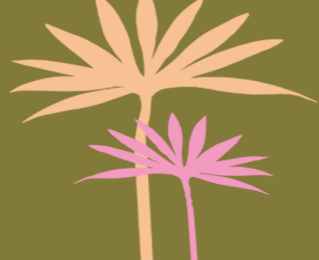
## Bristol Farmhouse (10-12 people)

This farmhouse is set within eight acres of private grounds with a long driveway off a country lane. It is part of a small holding farm used for grazing cattle, lambs, horses and chickens. It is only 15 minutes to Bristol city centre and 25 minutes to Bath.

When you enter the cottage there is a kitchen which leads through to a dining room with wood farmhouse table. The kitchen has microwave, oven and hob. There is also a toilet in the utility room next to the kitchen with dishwasher, freezer and large fridge.

The dining room leads on to the large sitting room with working log fire (logs provided in winter), three comfy sofas and 42" flat screen TV (satellite)/DVD/CD player. The sitting room has stairs up to the bedrooms.





## Chew Farmhouse with Spa (10-16 people)

This countryside farmhouse is full of character and 'oldie worldly' charm and sleeps up to 15 people. It is surrounded by beautiful scenery, is 5 minutes walk to the upmarket village of Chew Magna (with its three pubs, deli, and supermarket) and only 25 minutes drive to Bristol and 30 minutes to Bath. The owners do live next door to this cottage and although they are used to hen parties and music inside the cottage, there are neighbours in close proximity.



There is an on-site Farmhouse Spa which has an outdoor pool (heated Mar-Oct), hot tub, sauna and treatment areas; towels and robes are provided.

## Bath Barns (14-18 people)

These two beautiful and recently converted barn conversions are set in a secluded valley just 12 miles south of Bath near Babington. In total they can sleep 18 people.

The largest barn sleeps 12 and has huge rooms with beamed roofs and exposed brickwork. There is a large open plan kitchen and dining, a stunning sitting room with an open fire and amazing views down the valley.

It has a large private garden all around the back of the property with a terrace overlooking the valley. It also shares a courtyard at the front. There are French doors that open from the sitting room and another pair that open on to the terrace. The smaller barn sleeps 6 and adjoins the main barn.



Linen is provided but please take your own towels. There is a TV, DVD s and Freeview in both barns. There is a 'locals type' country pub five minutes walk and a nicer gastro pub three miles away.

## Log Fires and Friends (18-22+ people)

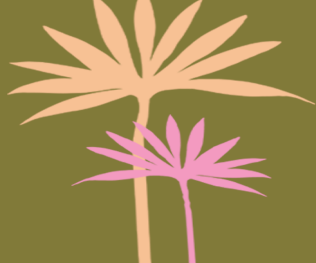
This five star self-catering detached house is set in the Somerset countryside just 20 minutes drive south of Bath.

There are 6 double bedrooms, 1 twin and 4 double sofa beds sleeping up to 22 people. Facilities include DVD, CD player, satellite TV and BBQ (bring your own charcoal). There is a huge beautiful private garden.



Opposite the house are a number of cottages so if there are 22+ people they can stay in these but still use the large house to socialise together. The cottages are in walking distance of a local country pub, across a field.

There is plenty of parking in the courtyard and Westbury train station is just 15 minutes away which is on the mainline train from London Paddington.



## Bath, Bristol & Somerset Cottage Holiday Packages & Prices

In the packages below we have grouped our most popular activities into themed breaks of two or three nights but please remember you are free to mix and match activities as you see fit, and you can have the cottage for up to seven nights. Please call 0800 234 6039 to get a price for the break that's right for you.

### Relaxation packages from £140pp

Two nights self catering accommodation  
Canapés delivered by a local caterer  
Treatments in cottage, therapist/s provide each person with one 30 minute treatment from a choice of: Facial / Manicure / Pedicure / Upper Back Massage  
Return transfers to Bath or Bristol for a night out  
**- you could swap the treatments in cottage for a visit to a spa though the price will increase**

### Lady of the Manor packages from £175pp

Two nights self catering accommodation  
Hamper on arrival  
A relaxing one hour horse riding trek  
Return transfers to the horse riding centre  
Dinner cooked by a local caterer in your cottage  
**- for clay shooting instead of horse-riding please add £5pp**

### Citylife packages from £165pp

Two nights self catering accommodation  
Two hour themed dance lessons e.g. Fame / Grease / Dirty Dancing  
Lunch in Bath or Bristol brasserie  
Return transfers into Bath or Bristol from your cottage (x2)  
Guest list club entrance

### Gastro & Gourmet packages from £155pp

Two nights self catering accommodation  
Canapés delivered by a local caterer  
Leisurely lunch at gastro pub  
Dinner cooked by a local caterer in your cottage

#### Important notes:

- All packages can be tailored to suit your group
- They can be extended to 1 week stays
- Transfers can be included to the activities
- Only available for groups of 6+
- Prices vary depending on time of year & number in group
- All cottages require a refundable damage deposit
- A non refundable deposit is payable on booking