



Cottages in Oxford & the Cotswolds

Oxford is situated on the eastern edge of the Cotswolds, and is bordered east and west by two rivers, the Thames (or Isis as it is known locally) and the Cherwell. The Eastern side of the Cotswolds, home to Blenheim Palace, provides stunning backdrops for a range of country pursuits, whilst the two rivers (and the canal) play host to a large variety of water activities. The town is, of course, famous the world over as a home of knowledge. The university dominates the reputation of this beautiful city, but there's a lot more to Oxford than its college spires.

Beautiful Barn (8-10 people)

This recently converted barn is situated on the edge of the Cotswolds just 5 miles from the beautiful town of Woodstock and 10 miles from Oxford.

It sleeps 8 and can accommodate a further 2 on the bed settee in the lounge. The barn is very warm and cosy with full central heating to original cast iron radiators, supplemented with a lovely wood burning stove in the lounge.

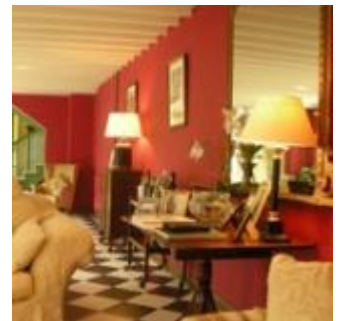
The bedrooms are 1 king size double bedroom with luxury ensuite shower room/wc, 1 double bedroom with beautiful beamed feature and dressing area, 1 twin bedded room and 1 bunk bedded room.



Luxury Cottage (10-13 people)

This stunning barn, situated on an old farm, is located in the beautiful Oxfordshire Cotswolds just north of Faringdon, convenient for Oxford, Cheltenham, Burford and London (60 miles away). It sleeps up to 13 people (one on a sofa bed).

Internally, the accommodation is open plan and presented in a contemporary style with some amazing and original features. Plasma TVs and free wireless internet access are installed throughout. Externally, the property enjoys several acres of fabulous private space and tranquil countryside.



Meadows & Woodland Farmhouse (12-14 people)

A 19th century Cotswold farmhouse restyled for 21st century living in a setting to take your breath away. WiFi, Freesat, home cinema, log fires and a jacuzzi bath will tempt you as much as the big outdoors where you can laze in hammocks, BBQ till dawn or just enjoy your own private meadows and woodland.



The Farmhouse is 500m from the nearest road with intervening woodland which makes it blissfully remote so you can be as quiet or as noisy as you like. It is 35 minutes to Oxford and Cheltenham.

There are five bedrooms sleeping up to 14 people. Bed 1 is on the ground floor and has a super king-size bed and ensuite. On the 1st floor: Bed 2 has a King-size bed and ensuite with Jacuzzi bath; Bed 3 has a King-size bed and Bed's 4 & 5 both have double beds and a double sofa bed. Also on the 1st floor is the family bathroom.

Stone Barn Conversions (12-15 people)

These two detached stone barn conversions sleep a total of 15 people.

They are grouped around a courtyard, in a glorious rural position, yet only 10 minutes drive from Burford, 25 minutes drive from Oxford and 35 minutes drive from Cheltenham.



The first cottage has accommodation for ten people. There are two double (one en-suite) and three twins (one en-suite). There is a huge lounge with wood burning stove and equally big dining/kitchen, both comfortable for a group of up to 15 friends.

The second cottage has accommodation for three/five. There is one double bedroom, one single bedroom and a double convertible sofa-bed in the lounge

Oxfordshire Farmhouse (16-20 people)

This 14th Century rambling farmhouse is in a beautiful Cotswold setting, 40 minutes from the centre of Oxford. Historical features such as original beams, flagstones and stone walls blend seamlessly with life's modern luxuries: under-floor heating, power showers, gas cooker, etc.



The enormous main kitchen has granite tops, an Aga and large dining table. The main sitting room is airy and bright but has a wood burning stove so you can be cozy on colder days. In the secluded garden you can enjoy croquet and badminton; there is also a barbecue and even a giant trampoline! This huge house is made for a group of friends to chill out and catch-up.



Oxford & The Cotswolds Cottage Holiday Packages & Prices

In the packages below we have grouped our most popular activities into themed breaks of two or three nights but please remember you are free to mix and match activities as you see fit, and you can have the cottage for up to seven nights. Please call 0800 234 6039 to get a price for the break that's right for you.

Relaxation packages from £140pp

Two nights self catering accommodation
Canapés delivered by a local caterer
Treatments in cottage, therapist/s provide each person with one 30 minute treatment
Return transfers to Oxford for a Night Out
- you could swap the treatments in cottage for a visit to a spa though the price will increase

Lady of the Manor packages from £170pp

Two nights self catering accommodation
Hamper on arrival
Chauffeured punt down the river in Oxford
Return transfers to Oxford for the punting
Three course dinner cooked and served by local caterer in your cottage

Citylife packages from £175pp

Two nights self catering accommodation
Pole dancing lessons in Oxford
Two course lunch or dinner in Oxford brasserie
Return transfers into Oxford from your cottage (x2)
Guest list club entrance

Gastro & Gourmet packages from £165pp

Two nights self catering accommodation
Canapés delivered by a local caterer
Leisurely lunch at gastro pub
Return transfers to gastro pub
Dinner cooked by a local caterer in your cottage

Important notes:

- All packages can be tailored to suit your group
- They can be extended to 1 week stays
- Transfers can be included to the activities
- Only available for groups of 6+
- Prices vary depending on time of year & number in group
- All cottages require a refundable damage deposit
- A non refundable deposit is payable on booking